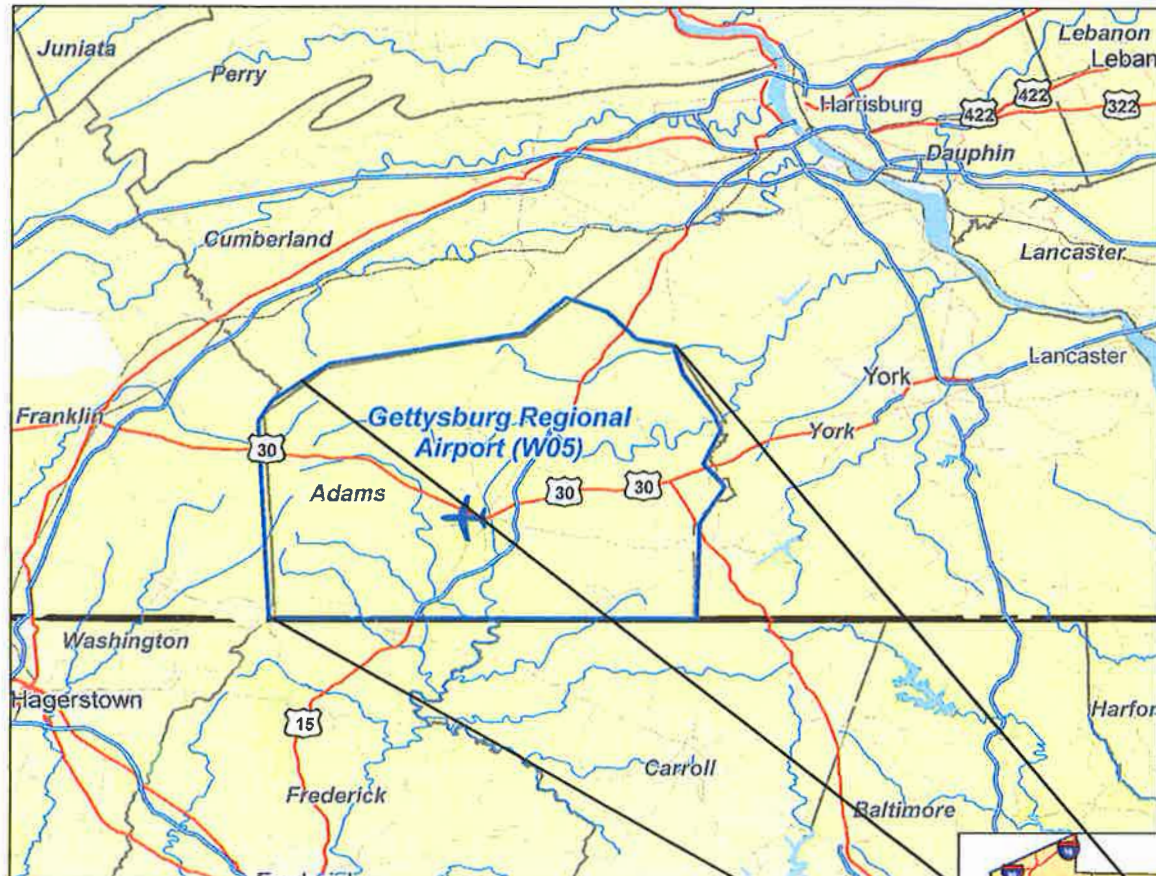


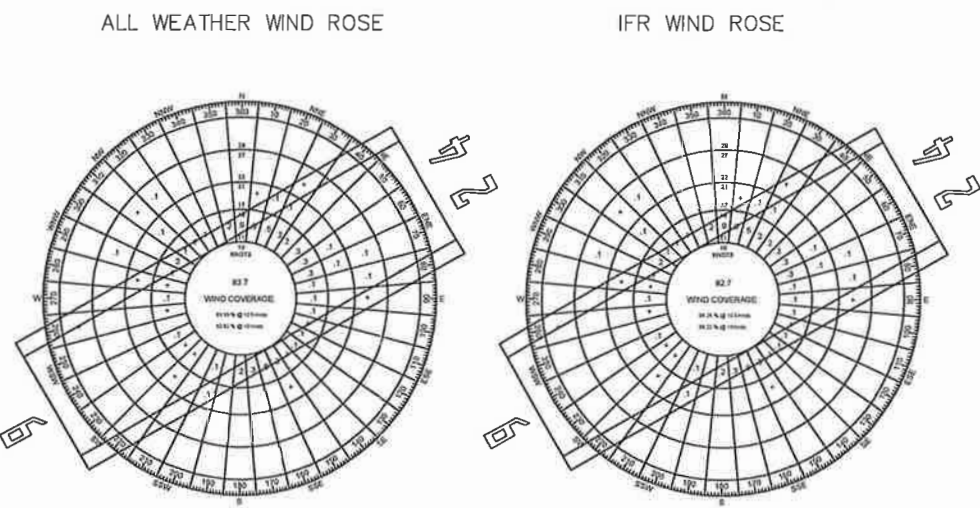
GETTYSBURG REGIONAL AIRPORT AIRPORT LAYOUT PLAN



FAA's approval of this Airport Layout Plan (ALP) represents acceptance of the general location of future facilities depicted. During the preliminary design phase, the airport owner is required to resubmit for approval the final locations, heights and exterior finish of structures. FAA's concern is obstructions, impact on electronic aids or adverse effects on controller view of aircraft approach and ground movement areas which could adversely affect the safety, efficiency or utility of the airport.



Drawing No.	Drawing Name	CAD Name
ALP-1	Cover Sheet	P W05 COVER 06-0773.dwg
ALP-2	Existing Airport Layout Plan Drawing	P W05 ALP EXISTING 06-0773.dwg
ALP-3	Airport Layout Plan Drawing	P W05 ALP 06-0773.dwg
ALP-4	Airport Airspace Drawing	P W05 AIRSPACE 06-0773.dwg
ALP-5	Inner Portion of the Approach Surface Drawing	P W05 INNER APP 06-0773.dwg
ALP-6	Terminal Area Drawing	P W05 TERMINAL 06-0773.dwg
ALP-7	Airport Land Use Plan	P W05 LAND USE 06-0773.dwg
ALP-8	Airport Property Map	P W05 PROPERT MAP 06-0773.dwg



SOURCE:
Gettysburg Regional Airport, Master Plan, April 2005, Midstate Consultants, Inc.
Weather observations for period 1993-2002 at the Hagerstown, MD weather station.

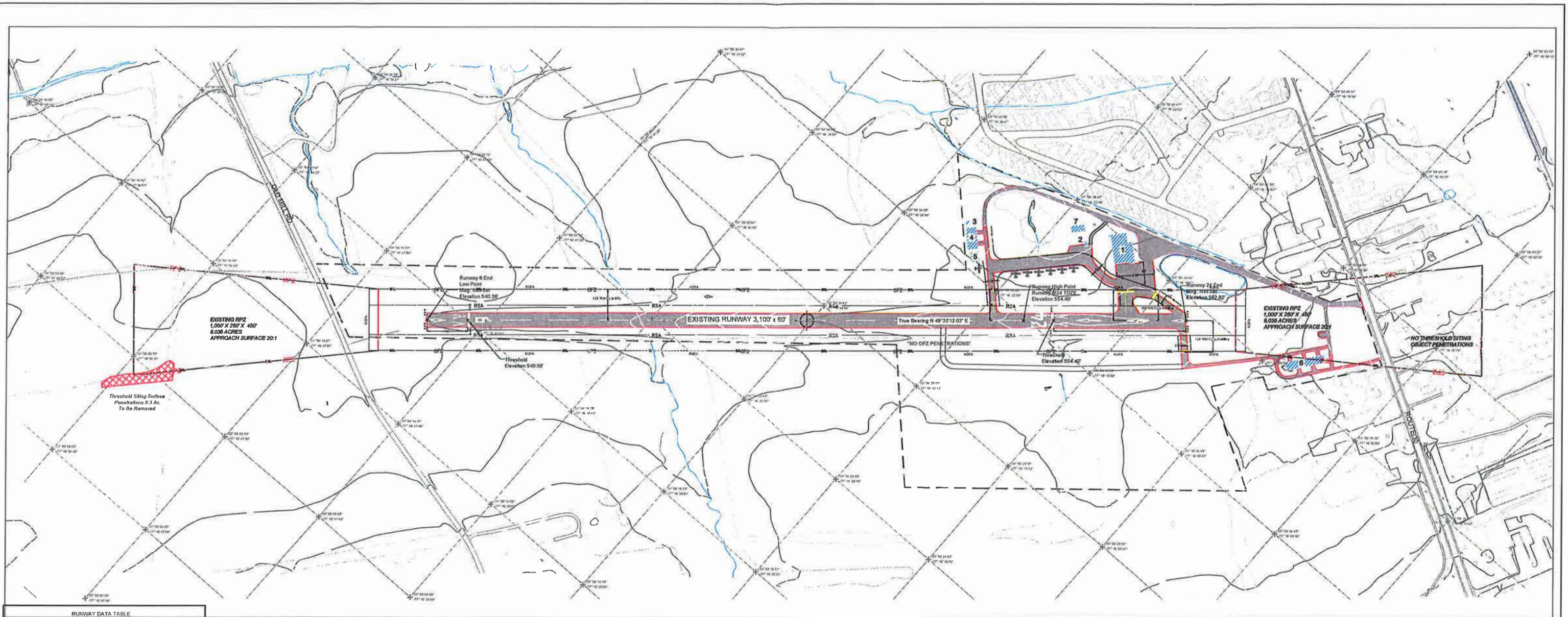
	10.5 Knots			13 Knots		
	VFR	IFR	All	VFR	IFR	All
Runway 6	70.36%	91.46%	72.34%	72.70%	93.06%	74.59%
Runway 24	82.63%	79.94%	82.84%	88.87%	80.95%	86.76%
Combined	86.67%	86.26%	89.09%	83.41%	88.22%	83.82%

Prepared By:
L. Robert Kimball & Associates, Inc.
Architects and Engineers
328 Innovation Boulevard, Suite 222
State College, Pa. 16803

Prepared For The:
**Susquehanna Area Regional
Airport Authority**
One Terminal Drive, Suite 300
Middletown, PA 17057



 328 Innovation Boulevard, Suite 222 State College, PA 16803 phone: (814) 472-7700 fax: (814) 472-7712 email: ron.deck@kimballcorp.com web site: www.kimballcorp.com	GETTYSBURG REGIONAL AIRPORT CUMBERLAND TOWNSHIP PENNSYLVANIA		
	Cover Sheet		
	AIP NUMBER: 3-42-0033-003-2007 LRP PROJECT NO: 06-1800-0773 CAD FILE: #W05 COVER 06-0773.dwg	DATE: 01/15/2010 DRAWN BY: JMT CHECKED BY: BAW	DRAWING NO. ALP - 1



RUNWAY DATA TABLE		
RUNWAY DATA	RUNWAY 6 EXISTING	RUNWAY 24 EXISTING
Effective Gradient	0.45%	0.45%
Maximum Grade Change	14.07'	14.02'
Wind Coverage % (10.5 Knots) - All Weather	80.99%	80.99%
Wind Coverage % (13 Knots) - All Weather	81.82%	81.82%
Mean Elevation (MSL)	554.47'	554.47'
Runway Length	3,107'	3,107'
Runway Width	60'	60'
Displaced Threshold	154.0'	153.7'
Usable Runway Length	3,107'	3,107'
Surface Type	Asphalt	Asphalt
Pavement Strength		
Single Wheel	18,500 lbs	12,500 lbs
Dual Wheel	30,000 lbs	30,000 lbs
Dual Tandem	N/A	N/A
Fast 77 Approach Surface Slope	3.0%	3.0%
Approach Slope	3.0%	3.0%
Visual Approach Aids	None	None
Unattended Approach Aids	None	None
Runway Lighting	MAL	MAL
Runway Marking	Visual	Visual
Airport Reference Code (ARC)	B-I Small	B-I Small
Design or Critical Aircraft	B-I Small Family	B-I Small Family
Stage Length	N/A	N/A
RSA Width	120'	120'
RSA Length Beyond RW End	240'	240'
OFZ Width	250'	250'
OFZ Length Beyond RW End	240'	240'
Obstacle Free Zone (OFZ)	250'	250'
FAH Part 77 Category	Visual	Visual
Runway End Coordinates (NAD 83)		
Latitude	N 30° 52' 16.13"	N 30° 52' 33.97"
Longitude	W 77° 16' 43.80"	W 77° 16' 43.82"
Runway End Elevation (MSL)	543.37'	553.47'
Displaced Threshold Elevation (MSL)	558.57'	554.47'
Displaced Threshold Latitude	N 30° 50' 19.52"	N 30° 50' 33.29"
Displaced Threshold Longitude	W 77° 16' 42.23"	W 77° 16' 43.80"
Line of Sight Visual Aids	No	No
Line of Sight Visual Aids	N/A	N/A

FACILITIES TABLE		
EXISTING		
#	DESCRIPTION	ELEV.
1	Hangar Office	572.8'
2	Fuel Storage	558.2'
3	Electrical Vault	568.0'
4	Hangar	568.0'
5	Existing Building	565.0'
6	T. Hangar	574.0'
7	Storage Pavilion	559.7'

AIRPORT DATA TABLE		
AIRPORT DATA		
	EXISTING	
Airport Elevation (MSL)	554.47'	
Airport Reference Point (NAD 83)		
Latitude	N 30° 52' 27.34"	
Longitude	W 77° 16' 28.84"	
Mean Sea Level (MSL) Marsh	53.0'	
Airport Terminal NAVD83	None	
IRSAS Service Level	General Aviation	
State Service Level	General Service (Basic)	
Wind Coverage Crosswind Component	85.5 Knots	
All Weather	80.99%	
Runway Lighting	FAH	
Taxiway Marking	Caterpillar (Paint)	
Design Aircraft	B-I Small Family	
Signature Variation	None	
Date of Aircraft Variation	July 2007	
Airport Reference Code	B-I Small	
Runway Hold Short from Centerline	120'	

DECLARED DISTANCES							
RUNWAY END ID.	ICDA	TCDA	ACDA	ICA	APPROACH END RSA LENGTH	STOP END RSA LENGTH	DATE OF APPROVAL
0 Existing	N/A	N/A	N/A	N/A	N/A	N/A	N/A
24 Existing	N/A	N/A	N/A	N/A	N/A	N/A	N/A

MODIFICATIONS OF DESIGN STANDARDS TABLE					
NO.	STANDARD MODIFIED	FAA STANDARDS	EXISTING CONDITION	PROPOSED ACTION	DATE APPROVED
		None at present time. Please reference Drawing ALP-03 for a list of proposed MOSs.			

Notes:

1. FAA's approval of this Airport Layout Plan (ALP) represents acceptance of the general location of future facilities depicted. During the preliminary design phase, the airport owner is required to resubmit for approval the final locations, heights and exterior finish of structures. FAA's concern is obstructions, impact on electronic aids, or adverse effects on controller view of aircraft approach and ground movement areas which could adversely affect the safety, efficiency or utility of the airport.
 2. Coordinate information is based on state plane coordinate system (SPCS), Pennsylvania South Zone, which is based upon a horizontal datum of North American Datum 83 (GRS 80 ellipsoid), and a vertical datum of NAVD 88.
 3. The Building Restriction Line (BRL) encompasses the Runway Protection Zones (RPZ), the Runway Object Free Area (ROFA), the Runway Visibility Zone, NAVAID Critical Areas, areas required for terminal instrument procedures, and airport traffic control lower clear line of sight.
 4. Runway centerline monuments are protected by a metal cover located in the runway asphalt.
- Non-Standard Conditions:**
1. The Runway Safety Area (RSA) width and length beyond the end of Runway 6 are substandard due to exceeding the grading requirements. It is recommended that the RSA be graded during the next construction project to meet the FAA's requirements.
 2. The Runway Object Free Area (ROFA) width is substandard due to terrain. It is recommended that a Modification of Standard (MOS) form be obtained.
 3. There are several incompatible land uses in the Runway 24 Runway Protection Zones (RPZ). Refer to Drawing No. ALP-7, Land Use Drawing, for property information and details regarding proposed action.
 4. One holdline is located 103' from the runway centerline. It is recommended the holdline be relocated at least 125' from the runway centerline.



LEGEND	
EXISTING	DESCRIPTION
—	RUNWAY SAFETY AREA (RSA)
—	RUNWAY OBJECT FREE AREA (ROFA)
—	RUNWAY OBSTACLE FREE ZONE (OFZ)
—	RUNWAY PROTECTION ZONE (RPZ)
—	TAXIWAY SAFETY AREA (TSA)
—	BUILDING RESTRICTION LINE
—	PAVEMENT
—	WETLAND/DRAINAGE FEATURES
+	AIRPORT REFERENCE POINT
—	AIRPORT BUILDINGS
—	GROUND ELEVATION CONTOUR
—	OTHER BUILDINGS
—	AIRPORT PROPERTY LINE
—	RUNWAY THRESHOLD LIGHTS
—	ROADS
—	TERRACED/ROW
—	TREES / TREE LINE
—	RUNWAY END STRIP PENETRATION

RUNWAY SAFETY AREA DETERMINATION					
RUNWAY END ID.	STANDARD RSA LENGTH BEYOND RUNWAY	ACTUAL RSA LENGTH BEYOND RUNWAY	VIOLATIONS TO RSA ALONG SIDE OF RW	RSA DETERMINATION	DATE APPROVED
6	240'	0' (prior grading issues)	Yes	No	N/A
24	240'	240'	Yes	No	N/A

REV. NO.	ITEM	DATE	SPONSOR APPROVAL	FAA APPROVAL

Kimball
L. Robert Kimball & Associates
Architects and Engineers

328 Innovation Boulevard Suite 222
Stata College, PA 16803

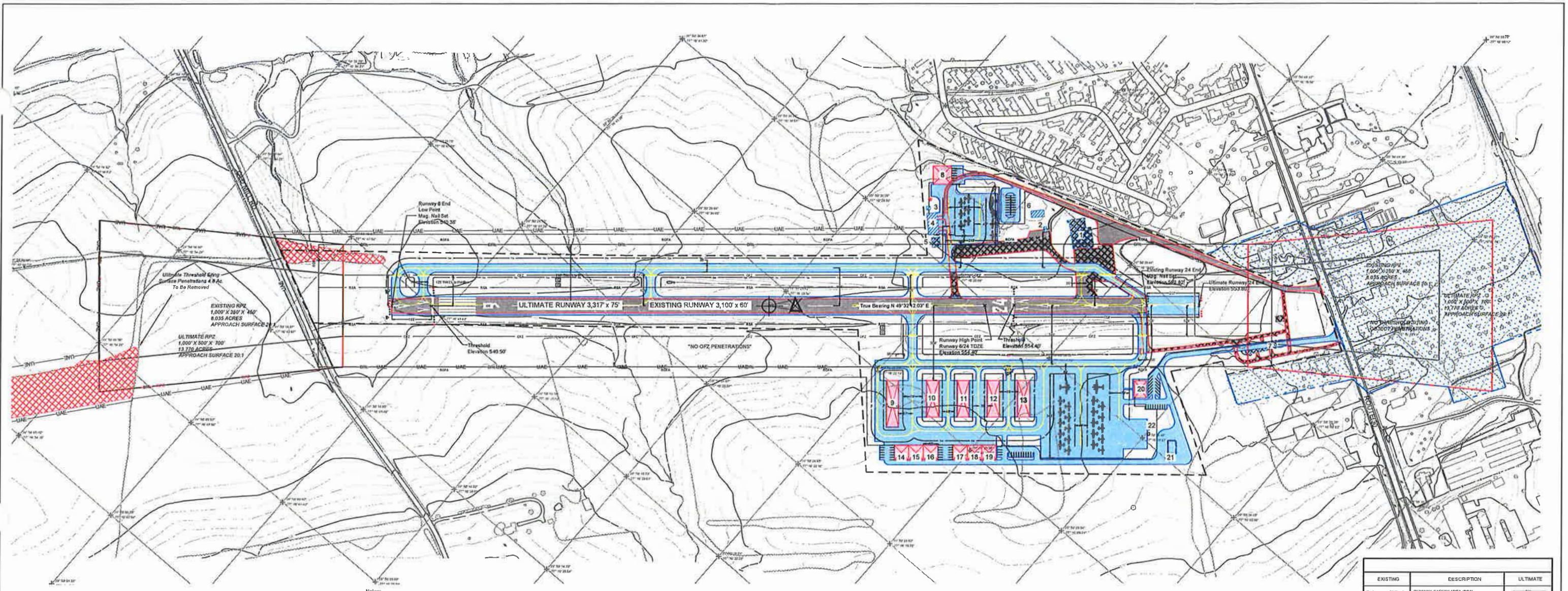
phone (614) 472-7700
fax (614) 472-7712
email ron.deck@kimballcorp.com
web www.kimballcorp.com

GETTYSBURG REGIONAL AIRPORT
CUMBERLAND TOWNSHIP PENNSYLVANIA

Existing Airport Layout Drawing

AIP NUMBER: 3-42-0033-003-2007 DATE: 01/15/2010 DRAWING NO.
LRK PROJECT NO: 06-1800-073 DRAWN BY: JMT **ALP - 2**

CAD FILE: P:\MS ALP EXISTING 06-1800-073.dwg CHECKED BY: BAW



- Notes:**
1. FAA's approval of this Airport Layout Plan (ALP) represents acceptance of the general location of future facilities depicted. During the preliminary design phase, the airport owner is required to resubmit for approval the final locations, heights and exterior finish of structures. FAA's concern is obstructions, impact on electronic aids, or adverse effects on controller view of aircraft approach and ground movement areas which could adversely affect the safety, efficiency or utility of the airport.
 2. Coordinate information is based on state plane coordinate system (SPCS, Pennsylvania South Zone, which is based upon a horizontal datum of North American Datum 83 (NAD 83) and a vertical datum of NAVD 88.
 3. The Building Restriction Line (BRL) encompasses the Runway Protection Zones (RPZ), the Runway Object Free Area (ROFA), the Runway Visibility Zone, NAVAID Critical Areas, areas required for terminal instrument procedures, and airport traffic control tower clear line of sight.
 4. Runway centerline monuments are protected by a metal cover located in the runway asphalt.
 5. The proposed location of the GVGIs is an approximation. A thorough GVGi stiling analysis was not performed as part of this ALP Update.

- Non-Standard Conditions:**
1. The Runway Safety Area (RSA) width and length beyond the end of Runway 6 are substandard due to exceeding the grading requirements. It is recommended that the RSA be graded during the next construction project to meet the FAA's requirements.
 2. The existing Runway Object Free Area (ROFA) width is substandard due to terrain and ultimately due to trees and hangars. The ultimate ROFA is penetrated by the Airport Access Road, airport fence, Old Mill Road, and a building. It is recommended that Modification of Standard (MOS) forms be obtained.
 3. There are several incompatible land uses in the Runway 24 Runway Protection Zones (RPZ). Refer to Drawing No. ALP-7, Land Use Drawing, for property information and details regarding proposed action.
 4. One existing holdline is located 103' from the runway centerline. It is recommended the holdline be relocated at least 125' from the runway centerline.

RUNWAY DATA	RUNWAY 6		RUNWAY 24	
	EXISTING	ULTIMATE	EXISTING	ULTIMATE
Effective Gradient	0.45%	0.45%	0.45%	0.45%
Maximum Grade Change	14.02'	14.02'	14.02'	14.02'
Wind Coverage % (10-3 Knots) - All Weather	83.92%	83.92%	83.92%	83.92%
Wind Coverage % (13 Knots) - All Weather	83.82%	83.82%	83.82%	83.82%
Max. Elevation (MSL)	554.47'	554.47'	554.47'	554.47'
Runway Length	3,107'	3,317'	3,107'	3,317'
Runway Width	60'	75'	60'	75'
Displaced Threshold	164.8'	164.8'	164.8'	164.8'
Usable Runway Length	3,107'	3,317'	3,107'	3,317'
Surface Type	Asphalt	Asphalt	Asphalt	Asphalt
Prevented Storage				
Single Wheel	12,500 lbs.	12,500 lbs.	12,500 lbs.	12,500 lbs.
Dual Wheel	30,000 lbs.	30,000 lbs.	30,000 lbs.	30,000 lbs.
Dual Tandem	N/A	N/A	N/A	N/A
Part 77 Approach Surface Slope	20:1	20:1	20:1	20:1
Approach Minimums	3.00%	1.00%	3.00%	3.00%
Visual Approach Aids	None	CVIS, RWL	None	CVIS
Instrument Approach Aids	None	None	None	None
Runway Lighting	MIRL	MIRL	MIRL	MIRL
Runway Marking	Visual	Visual	Visual	Visual
Airport Reference Code (ARC)	0-1 Small	0-1	0-1 Small	0-1
Design of Critical Aircraft	0-1 Small Family	0-1 Small Family	0-1 Small Family	0-1 Small Family
Blade Length	N/A	N/A	N/A	N/A
RSA Width	150'	150'	150'	150'
RSA Length Beyond RW End	240'	300'	240'	300'
RFA Width	250'	300'	250'	300'
RFA Length Beyond RW End	240'	300'	240'	300'
Obstacle Free Zone (OFZ)	250'	250'	250'	250'
FAA Part 77 Category	Visual	Non-Precision	Visual	Visual
Runway End Coordinates (MAD 83)				
Latitude	N 39° 50' 18.30"	N 39° 50' 18.30"	N 39° 50' 18.30"	N 39° 50' 18.30"
Longitude	W 77° 16' 43.80"	W 77° 16' 43.80"	W 77° 16' 43.80"	W 77° 16' 43.80"
Runway End Elevation (MSL)	549.50'	549.50'	549.50'	549.50'
Displaced Threshold Elevation (MSL)	549.50'	549.50'	549.50'	549.50'
Displaced Threshold Latitude	N 39° 50' 18.30"	N 39° 50' 18.30"	N 39° 50' 18.30"	N 39° 50' 18.30"
Displaced Threshold Longitude	W 77° 16' 43.80"	W 77° 16' 43.80"	W 77° 16' 43.80"	W 77° 16' 43.80"
Use of Sign/Visual Aids	N/A	N/A	N/A	N/A
Use of Sign/Visual Aids	N/A	N/A	N/A	N/A

DECLARED DISTANCES										
Runway	Takeoff Obstacle	End of Runway Obstacle	Obstacle Clearance	Obstacle Clearance	Obstacle Clearance	Obstacle Clearance	Obstacle Clearance	Obstacle Clearance	Obstacle Clearance	Obstacle Clearance
6 Existing	N/A	N/A	N/A	N/A	N/A	N/A	N/A	N/A	N/A	N/A
6 Ultimate	N/A	N/A	N/A	N/A	N/A	N/A	N/A	N/A	N/A	N/A
24 Existing	N/A	N/A	N/A	N/A	N/A	N/A	N/A	N/A	N/A	N/A
24 Ultimate	N/A	N/A	N/A	N/A	N/A	N/A	N/A	N/A	N/A	N/A

MODIFICATIONS OF DESIGN STANDARDS TABLE					
NO.	STANDARD MODIFIED	FAA STANDARDS	EXISTING CONDITION	PROPOSED ACTION	DATE APPROVED
1	ROFA Width	500'	Controlled Obstacle to be Determined when the ARC is increased and additional proposed easements are acquired	Obtain MOS	
2	ROFA Length Beyond RW End	300'		Obtain MOS	
3	ROFA Length Beyond RW 24	300'		Obtain MOS	

RUNWAY SAFETY AREA DETERMINATION					
Runway End ID	STANDARD RSA LENGTH BEYOND RUNWAY	ACTUAL RSA		RSA DETERMINATION	DATE APPROVED
		LENGTH BEYOND RUNWAY	VIOLATIONS TO BE REMOVED ALONG SIDE OF RW		
Existing 6	240'	0' (Grass grading sound)	Yes	No	N/A
Ultimate 6	300'	300'	No	No	N/A
Existing 24	240'	240'	Yes	No	N/A
Ultimate 24	300'	300'	No	No	N/A



AIRPORT DATA TABLE			
AIRPORT DATA	EXISTING	ULTIMATE	
Airport Elevation (MSL)	554.47'	554.47'	
Airport Reference Point (NAD 83)			
Latitude	N 39° 50' 18.30"	N 39° 50' 18.30"	
Longitude	W 77° 16' 43.80"	W 77° 16' 43.80"	
Area: Acreage	88.0'	88.0'	
Airport Terminal	None	None	
RPZ Similar Level	General Aviation	General Aviation	
State Service Level	General Service (Basic)	General Service (Basic)	
Wind Coverage Obstacle Component	10.9 Knots	10.9 Knots	
VFR/IFR Weather	24.67% / 95.25% / 99.9%	24.67% / 95.25% / 99.9%	
Taxiway Lighting	N/A	LSL	
Taxiway Marking	Centerline (Paint)	Centerline	
Design Aircraft	0-1 Small Family	0-1 Small Family	
Magnetic Variation	10° 40' 00" (2007)	10° 40' 00" (2007)	
Date of Magnetic Variation	April 2007	April 2007	
Airport Reference Code	0-1 Small	0-1	
Taxiway Holdlines from Centerline	120'	120'	

FACILITIES TABLE				
#	EXISTING DESCRIPTION	ELEV.	BLDG.	ULTIMATE DESCRIPTION
1	Hanger/Office	572.0'	8	Unit Hanger
2	Fuel Storage	558.0'	10	T-Hanger
3	Electrical Vault	568.0'	10	T-Hanger
4	Hanger	568.0'	11	T-Hanger
5	Existing Hanger	565.0'	12	T-Hanger
6	Storage Pavilion	559.7'	13	T-Hanger
7	T-Hanger	574.0'	14	Unit Hanger
			15	Unit Hanger
			16	Unit Hanger
			17	Unit Hanger
			18	Unit Hanger
			19	Unit Hanger
			20	FBO / Terminal Building
			21	Fuel Farm
			22	Fuel Pump

EXISTING	DESCRIPTION	ULTIMATE
Reference ALP - 2	RUNWAY SAFETY AREA (RSA)	-----
Reference ALP - 2	RUNWAY OBJECT FREE AREA (ROFA)	-----
Reference ALP - 2	RUNWAY OBSTACLE FREE ZONE (OFZ)	-----
Reference ALP - 2	RUNWAY PROTECTION ZONE (RPZ)	-----
Reference ALP - 2	TAXIWAY SAFETY AREA (TSA)	-----
	PAVEMENT	-----
	AIRPORT REFERENCE POINT	-----
	AIRPORT BUILDINGS	-----
	WETLANDS/GRASSLAND FEATURES	-----
	ROTATING BEACON	-----
	OTHER BUILDINGS	-----
	PROPERTY TO BE ACQUIRED	-----
	FENCE	-----
	ROADS	-----
	GROUND ELEVATION CONTOURS	-----
	BUILDING RESTRICTION LINE	-----
	TETRAPOD	-----
	TREES / TREE LINE	-----
	RUNWAY THRESHOLD LIGHTS	-----
	RUNWAY END BRIDGE PENETRATION	-----
	GENERIC VISUAL GUIDANCE INDIC (VGSI)	-----
	AVIATION EASMENTS	-----
	RUNWAY END IDENTIFIER LIGHTS (REIL)	-----
	PAVEMENT TO BE REMOVED	-----
	BUILDINGS TO BE REMOVED	-----

FEDERAL AVIATION ADMINISTRATION APPROVAL

CONDITIONALLY APPROVED

MANAGER HARRISBURG ADO _____

DATE _____

AIRSPACE STUDY NUMBER _____

SUBJECT TO COMMENTS IN LETTER DATED _____

GETTYSBURG REGIONAL AIRPORT
Susquehanna Area Regional Airport Authority (SARAA)

APPROVED _____ DATE _____

Executive Director

REV. NO.	ITEM	DATE	SPONSOR APPROVAL	FAA APPROVAL

Kimball
L. Robert Kimball & Associates
Architects and Engineers

326 Innovation Boulevard, Suite 222
State College, PA 16803

phone: (814) 472-7700
fax: (814) 472-7712
email: ron.deck@kimballcorp.com
web site: www.kimballcorp.com

GETTYSBURG REGIONAL AIRPORT
CUMBERLAND TOWNSHIP PENNSYLVANIA

Airport Layout Plan

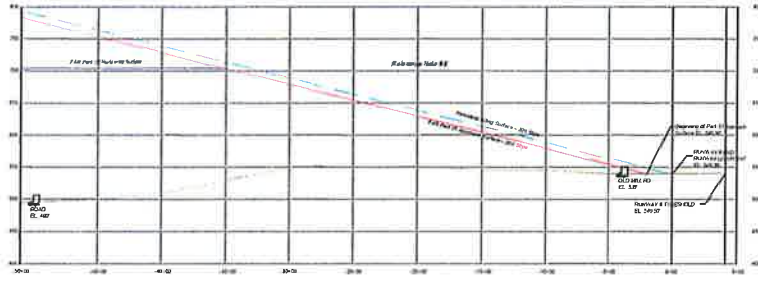
AIP NUMBER: 3-42-0033-003-2007 DATE: 01/15/2010 DRAWING NO. ALP - 3

LRK PROJECT NO: 06-1800-0773 DRAWN BY: JMT

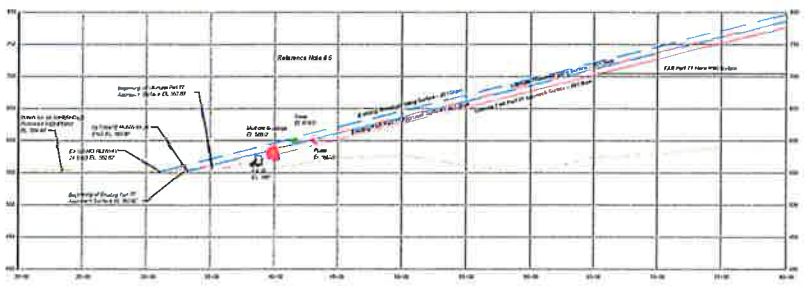
CAD FILE: P:\05 ALP 06-0773.dwg CHECKED BY: BAW

Profile Scale
Vertical -- 1" = 150'
Horizontal -- 1" = 750'

RUNWAY 6



RUNWAY 24



OBSTRUCTION DATA TABLE

NO.	DESCRIPTION	ELEVATION	PENETRATION	SURFACE	DISPOSITION
1	Group of Trees	657'	25'	A.S./T.S.	Remove/Lower/Light
2	Group of Trees	593'	28'	P.S./A.S./T.S.	Remove/Lower/Light
3	Group of Trees	615'	40'	P.S./T.S.	Remove/Lower/Light
4	Group of Trees	593'	39'	T.S.	Remove/Lower/Light
5	Hangars	588'	20'	P.S./T.S.	Demolish
6	Utility Poles & Trees	620'	25'	A.S.	Remove/Lower/Light/Request Det. of No Hazard
7	Buildings & Trees	595'	12'	A.S./T.S.	Remove/Lower/Light/Request Det. of No Hazard
8	Group of Trees	750'	90'	C.S.	Request Determination of No Hazard

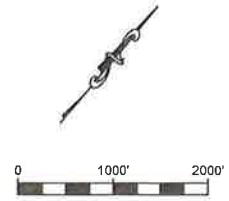
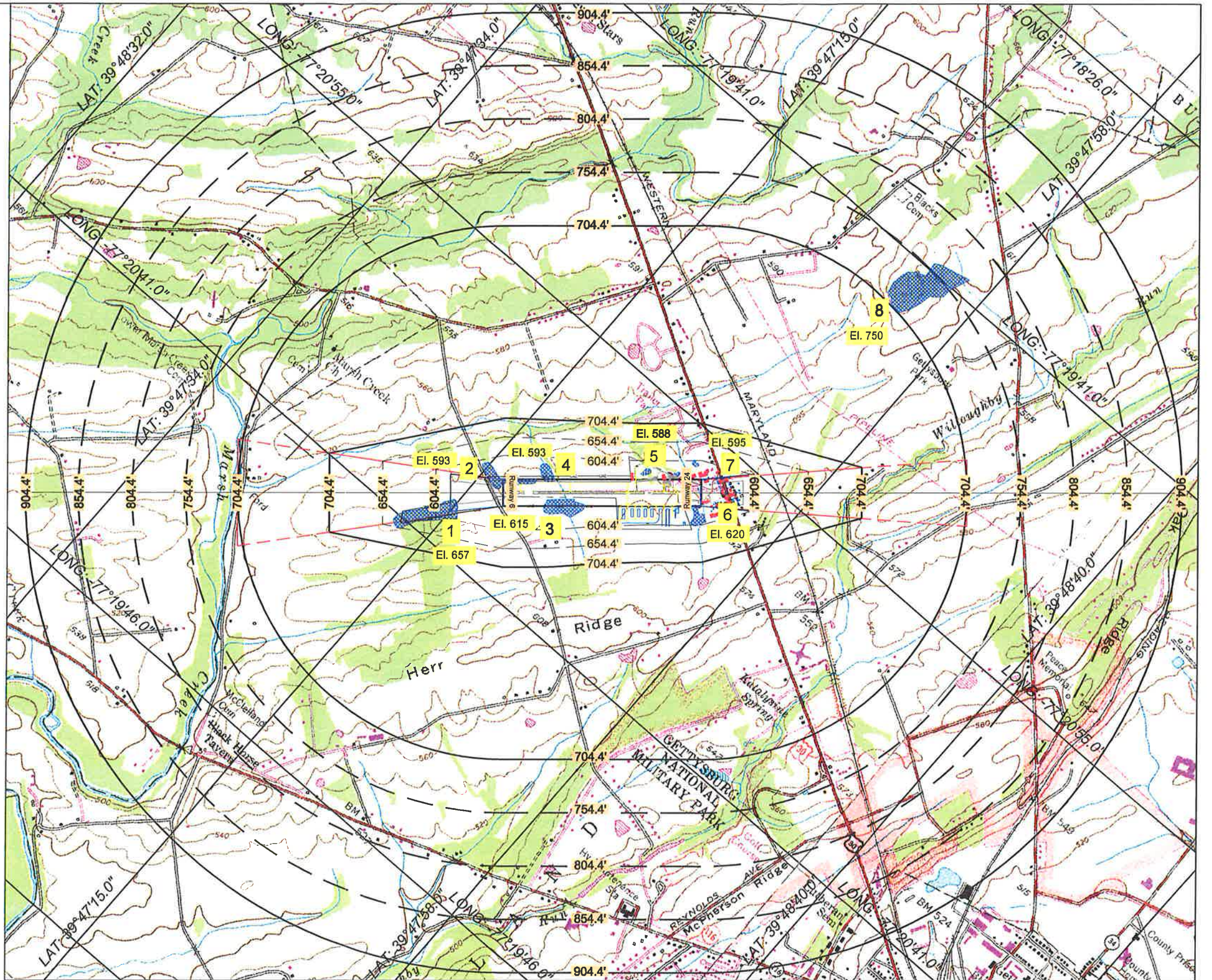
NOTES:

1. Base Map composed of two (2) U.S.G.S. Topographic Maps, Gettysburg, PA quadrangle, (1951, photo revised 1973); Fairfield, PA quadrangle (1951, photo revised in 1973)
2. Contour Interval: 20 feet.
3. Aerial surfaces are based on FAR Part 77.25, Objects Affecting Navigable Airspace, for an ultimate runway length of 5,005'. The Aerial Contours illustrate the height limitations within each zone.
4. Established Airport Elevation: 590.0'. Recent survey information indicates the highest point on the usable runway to be 554.4'. FAR Part 77 surfaces are based upon an elevation of 554.4'.
5. Assume 70' for tree heights, 30' for building heights, and 35' for utility pole heights.
6. Refer to Inner Portion of the Approach Surface Drawing (Drawing No. ALP-5) for FAR Part 77 Inner Approach Surface details and proposed disposition.
7. Gettysburg Borough and Cumberland Township has height hazard zoning limitation ordinances. Franklin Township and Highland Township do not have zoning or any type of height hazard limitation ordinances.

LEGEND

AERIAL SURFACE BOUNDARY	704.4'
AERIAL CONTOURS	754.4'
BUILDING OBSTRUCTIONS	[Red rectangle]
ROAD WITH 15' VEHICLE (Profile)	[Blue rectangle]
TREE OBSTRUCTIONS	[Blue rectangle]
PART 77 APPROACH SURFACE	A.S.
PART 77 HORIZONTAL SURFACE	H.S.
PART 77 CONICAL SURFACE	C.S.
PART 77 TRANSITIONAL SURFACE	T.S.
PART 77 PRIMARY SURFACE	P.S.
ULTIMATE RW PROT. ZONE (RPZ)	[Blue line]
ULTIMATE AIRPORT PROPERTY LINE	[Blue line]
ULTIMATE EASEMENT	[Blue line]
THRESHOLD SITING SURFACE (Profile)	[Blue line]

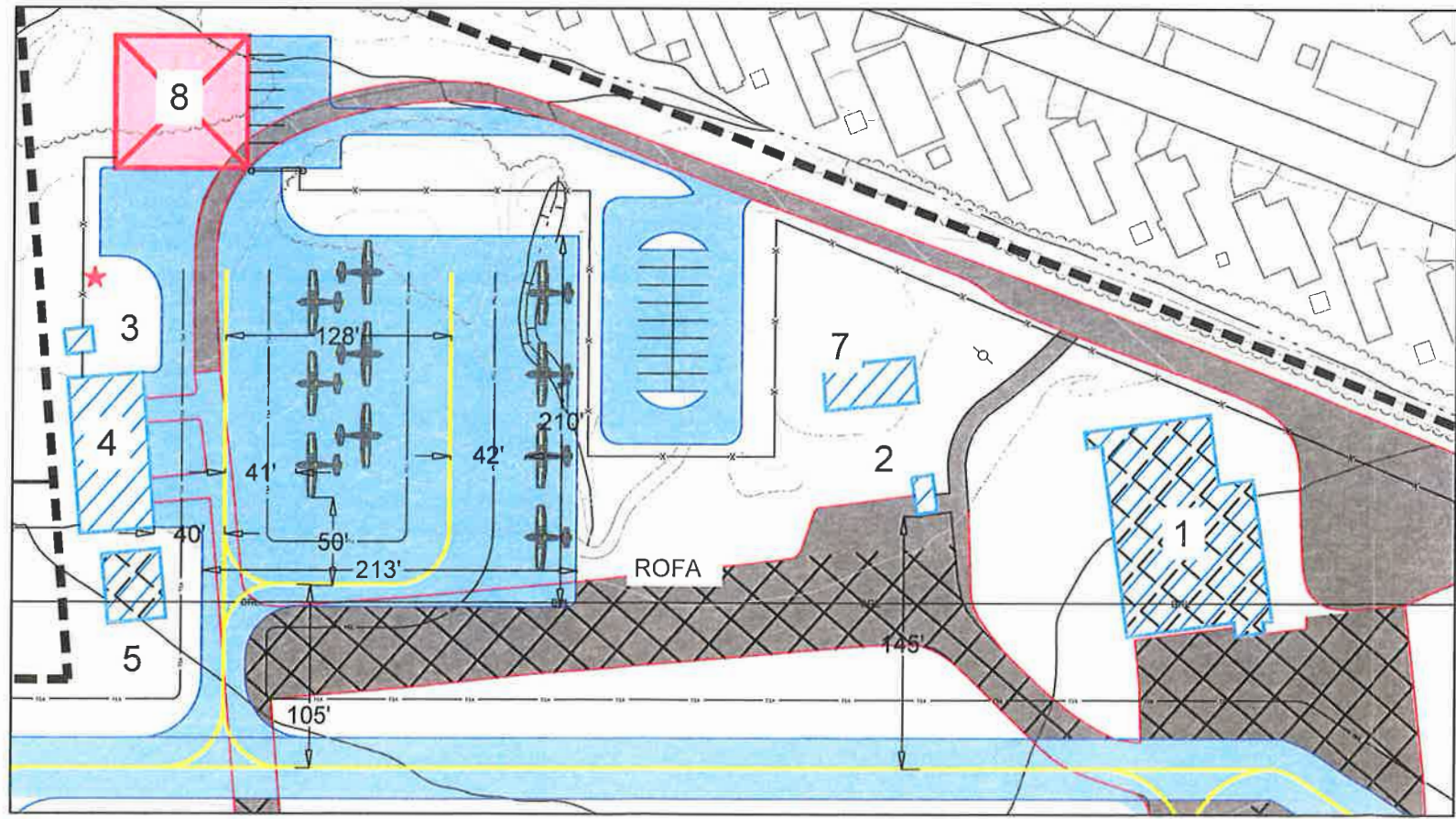
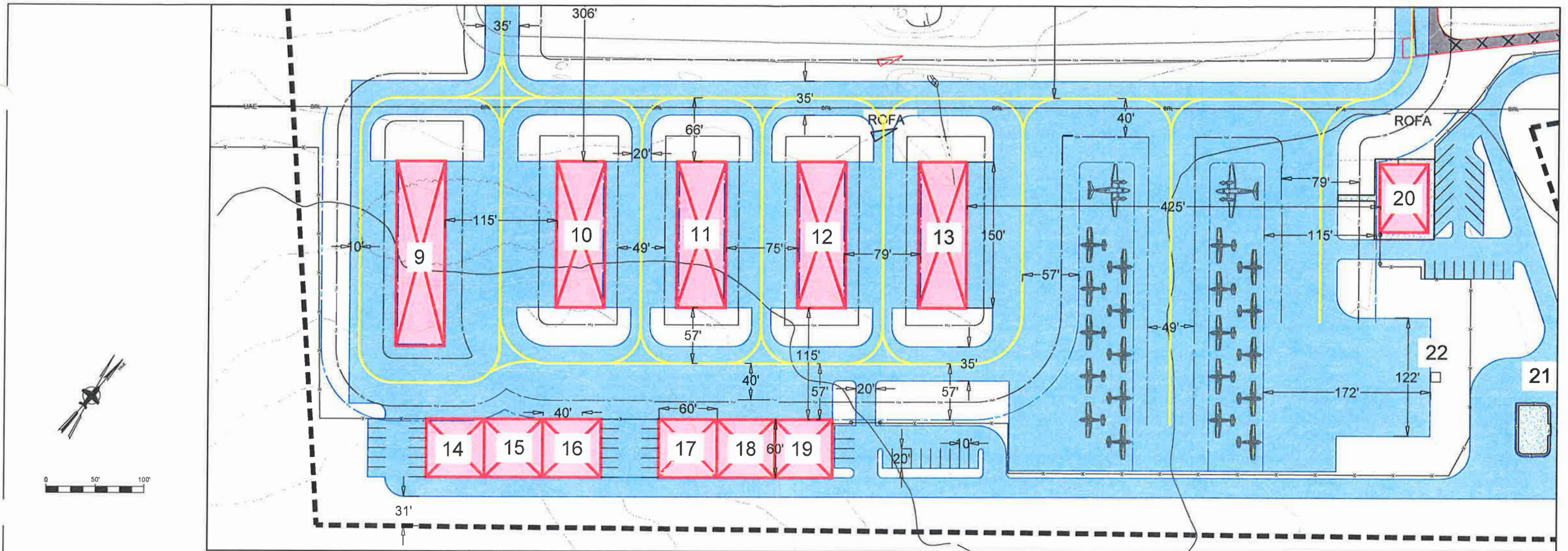
FAR PART 77 DIMENSIONS	
WIDTH OF PRIMARY SURFACE AND APPROACH SURFACE WIDTH AT INNER END	300'
RADIUS OF HORIZONTAL SURFACE	5,000'
APPROACH SURFACE WIDTH AT OUTER END	600' - 1,000'
APPROACH SURFACE LENGTH	1,000'
APPROACH SLOPE	20:1
CONICAL SURFACE	1:500'



REV. NO.	ITEM	DATE	SPONSOR APPROVAL	FAA APPROVAL

Kimball
L. Robert Kimball & Associates
Architects and Engineers
328 Innovation Boulevard Suite 222
State College, PA 16803
phone (814) 472-7700
fax (814) 472-7712
email info@kimballcorp.com
www.kimballcorp.com

GETTYSBURG REGIONAL AIRPORT
CUMBERLAND TOWNSHIP PENNSYLVANIA
Airport Airspace Drawing
AIP NUMBER: 3-42-0039-003-2007 DATE: 01/15/2010 DRAWING NO.
LRK PROJECT NO: 08-1800-0773 DRAWN BY: JMT
CAD FILE: P:\WAB\Airspace\08-0773.dwg CHECKED BY: BAW
ALP - 4



LEGEND		
EXISTING	DESCRIPTION	ULTIMATE
Reference ALP - 2	RUNWAY SAFETY AREA (RSA)	---
Reference ALP - 2	RUNWAY OBJECT FREE AREA (ROFA)	---
Reference ALP - 2	RUNWAY OBSTACLE FREE ZONE (OZF)	---
---	PAVEMENT TO BE REMOVED	NA
Reference ALP - 2	TAXIWAY SAFETY AREA (TSA)	---
---	PAVEMENT	---
NA	AVIATION EMBLEMEN	---
---	BUILDINGS TO BE REMOVED	NA
---	AIRPORT BUILDINGS	---
NA	ROTATING BEACON	---
---	OTHER BUILDINGS	---
---	AIRPORT PROPERTY LINE	---
---	BUILDING RESTRICTION LINE	---
Name	FENCE	---
---	ROADS	---
---	GROUND ELEVATION CONTOURS	---

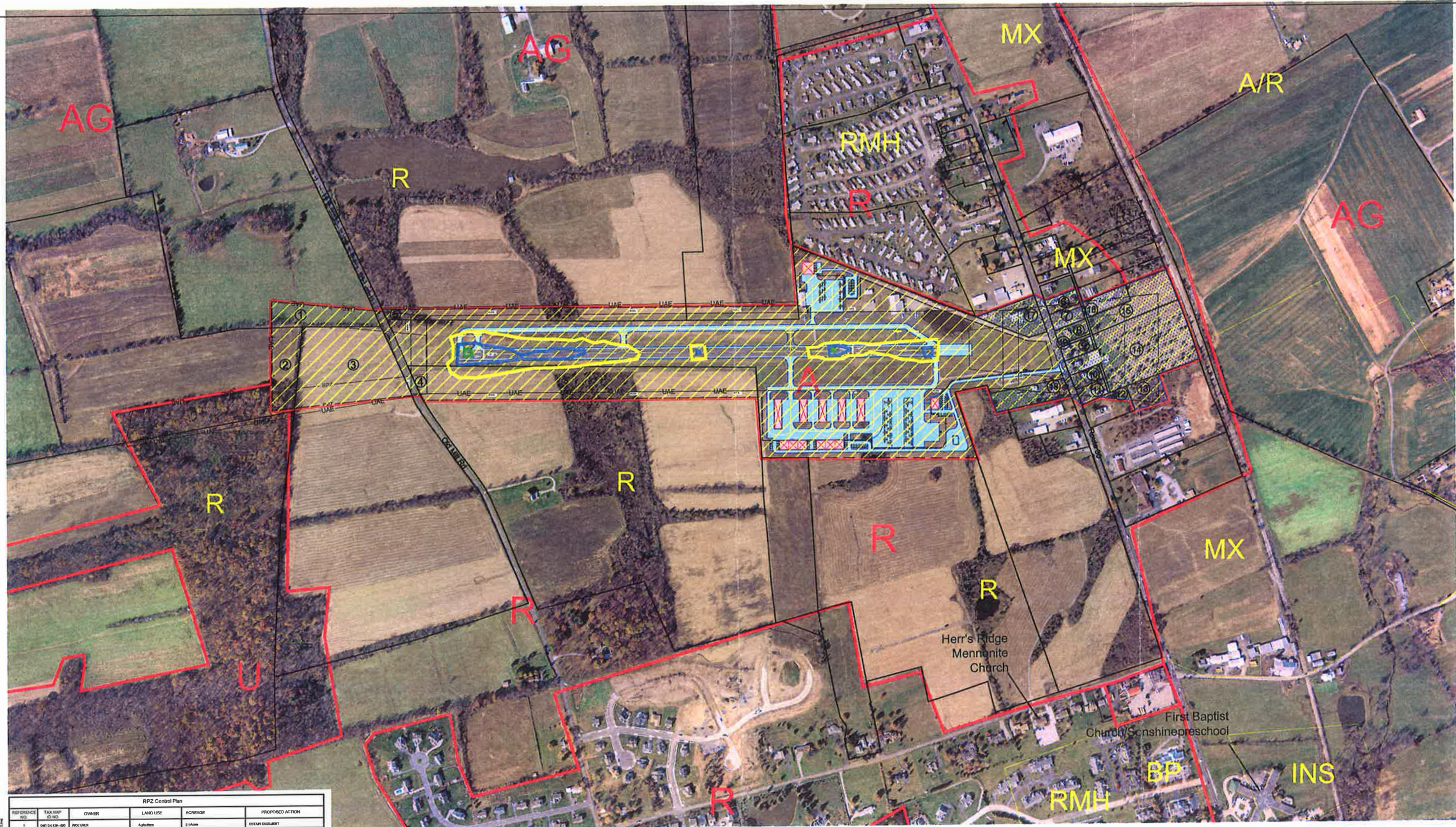
FACILITIES TABLE				
#	EXISTING DESCRIPTION	ELEV.	BLDG #	ULTIMATE DESCRIPTION
1	Hangar/Office	572.7	8	Unit Hangar
2	Fuel Storage	556.7	9	T-Hanger
3	Electrical Vault	568.0	10	T-Hanger
4	Hangar	568.0	11	T-Hanger
5	Existing Hangar	565.0	12	T-Hanger
6	T-Hanger	577.4	13	T-Hanger
7	Storage Pavilion	569.7	14	Unit Hangar
			15	Unit Hangar
			16	Unit Hangar
			17	Unit Hangar
			18	Unit Hangar
			19	Unit Hangar
			20	FBO / Terminal Building
			21	Fuel Farm
			22	Fuel Pump



REV. NO.	ITEM	DATE	SPONSOR APPROVAL	FAA APPROVAL

Kimball
 L. Robert Kimball & Associates
 Architects and Engineers
 328 Innovation Boulevard Suite 222
 State College, PA 16803
 phone: (814) 472-7700
 fax: (814) 472-7712
 email: ron.deck@kimballcorp.com
 web site: www.kimballcorp.com

GETTYSBURG REGIONAL AIRPORT
 CUMBERLAND TOWNSHIP PENNSYLVANIA
Terminal Area Drawing
 AIP NUMBER: 3-42-0033-003-2007 DATE: 01/15/2010 DRAWING NO.
 LRK PROJECT NO: 06-1800-0773 DRAWN BY: JMT
 CAD FILE: P:\05 ALP 09-0773.dwg CHECKED BY: BAW
ALP - 6



REFERENCE NO.	TAX MAP ID NO.	OWNER	LAND USE	ACREAGE	PROPOSED ACTION
1	0813-019-000	WICKNER	Agriculture	3.14Acres	OBTAIN EASEMENT
2	0813-028-000	STRADINSKI	Agriculture	3.33Acres	OBTAIN EASEMENT
3	0813-017-000	B & A CUSTOM BUILT HOMES	Agriculture	3.33Acres	OBTAIN EASEMENT
4	0813-017-000	B & A CUSTOM BUILT HOMES	Agriculture	6.66Acres	OBTAIN EASEMENT
5	0813-019-000	DRAY	Agriculture	3.33Acres	OBTAIN EASEMENT
6	0813-084-000	BAKER	Residential	1.72 Acres	ACQUIRE IN FEE
7	0813-086-000	ADAM COUNTY INTERPATH	Commercial	1.23 Acres	ACQUIRE IN FEE
8	0813-088-000	BETTEL	Residential	2.58 Acres	ACQUIRE IN FEE
9	0813-087-000	BORLITZ	Residential	0.31 Acres	ACQUIRE IN FEE
10	0813-088-000	LAMBERT	Residential	0.43Acres	ACQUIRE IN FEE
11	0813-019-000	HORABAKE'S	Residential	0.28Acres	ACQUIRE IN FEE
12	0813-019-000	KJC ENTERPRISES LLC	Residential	3.33Acres	ACQUIRE IN FEE
13	0813-019-000	KJC ENTERPRISES LLC	Residential	3.33Acres	ACQUIRE IN FEE
14	0813-088-000	BETTEL	Residential	3.33Acres	ACQUIRE IN FEE
15	0813-088-000	BETTEL	Residential	3.33Acres	ACQUIRE IN FEE
16	0813-086-000	ADAM COUNTY INTERPATH	Commercial	1.23 Acres	ACQUIRE IN FEE
17	0813-019-000	GANNETT	Commercial	2.24 Acres	ACQUIRE IN FEE
18	0813-019-000	DORSON	Residential	1.41 Acres	ACQUIRE IN FEE

LEGEND	
AG	Agriculture
R	Residential
U	Undeveloped
RMH	Residential Medium Density
MX	Medium Density Residential
A/R	Arts and Recreation
BP	Business Professional
INS	Institutional
---	Land Use Boundary
---	Zoning Boundary
---	Property To Be Acquired
---	Ultimate Easements
---	Existing Runway Protection Zone (RPZ)
---	Ultimate Runway Protection Zone (URPZ)
---	Adjacent Property Parcels
---	Ultimate Runway
---	50 DNL Noise Contour
---	70 DNL Noise Contour
---	Mixed Use District
---	Residential District
---	Business Park District
---	Institutional District



- Notes**
- Noise contours developed using INM Version 7 and based upon 2007 fleet mix and operations.
 - Gettysburg Borough and Cumberland Township has height hazard zoning limitation ordinances. Franklin Township and Highland Township do not have zoning or any type of height hazard limitation ordinances.
 - Land usage determined from a visual inspection of the aerial photography, Zoning Information from Cumberland Township.



REV. NO.	ITEM	DATE	SPONSOR APPROVAL	FAA APPROVAL

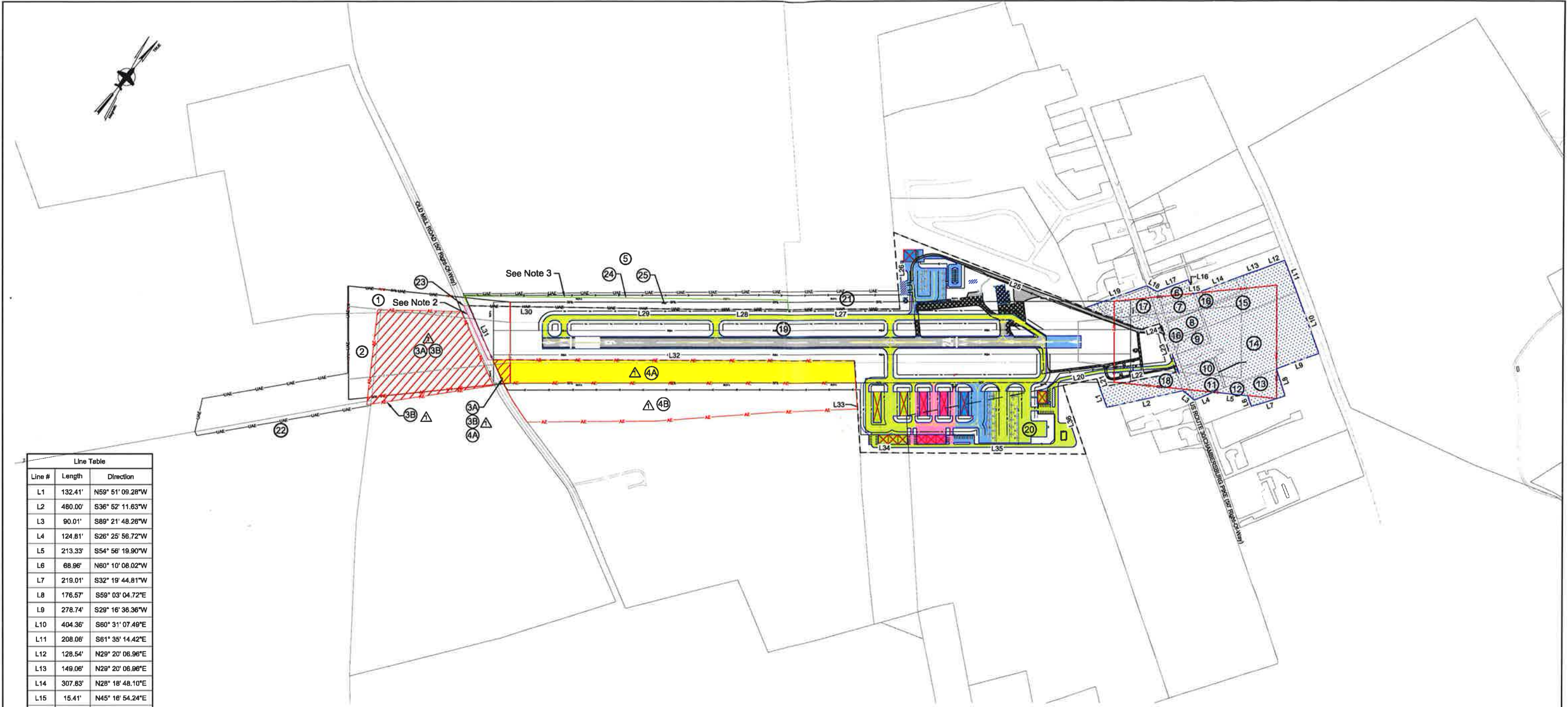
Kimball
L. Robert Kimball & Associates
Architects and Engineers
328 Innovation Boulevard Suite 222
Slate College, PA 16803
phone (814) 472-7700
fax (814) 472-7712
email ron.deck@kimballcorp.com
web site www.kimballcorp.com

GETTYSBURG REGIONAL AIRPORT
CUMBERLAND TOWNSHIP PENNSYLVANIA

Airport Land Use Plan

AIP NUMBER: 3-42-0033-003-2007 DATE: 01/15/2010 DRAWING NO. ALP - 7

LRK PROJECT NO. 08-1600-0773 DRAWN BY: JMT
CAD FILE: P:\Web\Land Use\080773.dwg CHECKED BY: BAW



Line #	Length	Direction
L1	132.41'	N69° 51' 09.28"W
L2	480.00'	S36° 52' 11.63"W
L3	90.01'	S89° 21' 48.26"W
L4	124.81'	S26° 25' 56.72"W
L5	213.33'	S54° 56' 19.90"W
L6	68.96'	N60° 10' 08.02"W
L7	219.01'	S32° 19' 44.81"W
L8	176.57'	S59° 03' 04.72"E
L9	278.74'	S29° 16' 36.36"W
L10	404.36'	S60° 31' 07.49"E
L11	208.06'	S61° 35' 14.42"E
L12	128.54'	N29° 20' 06.96"E
L13	149.06'	N29° 20' 06.96"E
L14	307.83'	N28° 18' 48.10"E
L15	15.41'	N45° 16' 54.24"E
L16	89.66'	S59° 15' 00.12"E
L17	210.38'	N29° 00' 06.12"E
L18	71.59'	N77° 54' 18.87"E
L19	393.08'	N29° 14' 19.15"E
L20	213.74'	N38° 19' 47.41"E
L21	56.44'	S60° 15' 18.43"E
L22	474.49'	N37° 58' 51.21"E
L23	316.16'	N59° 48' 30.16"W
L24	118.19'	S32° 12' 39.34"W
L25	1632.50'	S70° 49' 57.08"W
L26	473.77'	S45° 20' 31.42"E
L27	723.14'	S49° 08' 58.14"W
L28	506.97'	S49° 14' 21.65"W
L29	704.97'	S50° 07' 17.71"W
L30	724.16'	S50° 09' 14.07"W
L31	367.43'	S65° 36' 00.22"E
L32	2225.36'	N49° 25' 08.15"E
L33	567.96'	S44° 06' 03.51"E
L34	301.54'	N49° 42' 28.27"E
L35	1090.88'	N49° 47' 38.64"E
L36	448.04'	N59° 22' 25.10"W

EXISTING	DESCRIPTION	ULTIMATE
Reference ALP - 2	RUNWAY SAFETY AREA (RSA)	---
Reference ALP - 2	RUNWAY OBJECT FREE AREA (ROFA)	---
Reference ALP - 2	RUNWAY OBSTACLE FREE ZONE (OFZ)	---
Reference ALP - 2	RUNWAY PROTECTION ZONE (RPZ)	---
Reference ALP - 2	TAXIWAY SAFETY AREA (TSA)	---
---	PAVEMENT	---
---	BUILDINGS TO BE REMOVED	NA
---	PAVEMENT TO BE REMOVED	NA
---	AIRPORT BUILDINGS	---
---	AIRPORT PARCEL BOUNDARY	---
---	OTHER BUILDINGS	---
---	AIRPORT PROPERTY LINE	---
---	PROPERTY TO BE ACQUIRED	---
None	FENCE	---
---	ROADS	---
---	AVIGATION EASEMENTS	---
---	BUILDING RESTRICTION LINE	---
---	TERRAZZED	---

REFERENCE NO.	TAX PARCEL NO.	PREVIOUS OWNER	DEED REFERENCE	ACREAGE	DATE OF ACQUISITION	GRANT NUMBER OR PURCHASE INFORMATION	PURPOSE OF ACQUISITION OR TYPE OF EASEMENT
19	09E12-0107-000	CLYDE BACHERT	49450023	49.86 ACRES	06/28/2006	FAA Grant 3-42-0033-002-2006	Purchase Airport
20	09E12-0108-000	B & A CUSTOM BUILT HOMES INC	52060178	7.7 ACRES	06/14/2008	FAA Grant 3-42-0033-002-2006	Purchase Land for Development
3A	09E12-0127-000	B & A CUSTOM BUILT HOMES INC	52060178	7.87 ACRES	06/11/2013	FAA Grant 3-42-0033-008-2013	RPZ Avigation Easement
3B	09E12-0127-000	B & A CUSTOM BUILT HOMES INC	52060178	8.11 ACRES	06/11/2013	FAA Grant 3-42-0033-008-2013	Part 77 Approach Avigation Easement
4A	09E12-0127-000	B & A CUSTOM BUILT HOMES INC	52060178	7.08 ACRES	06/11/2013	FAA Grant 3-42-0033-008-2013	RPZ Avigation Easement
4B	09E12-0127-000	B & A CUSTOM BUILT HOMES INC	52060178	10.22 ACRES	06/11/2013	FAA Grant 3-42-0033-008-2013	Part 77 Transitional Surface Avigation Easement
23	09E12-0107-000	SARAA	N/A	0.24 ACRES	N/A	N/A	Township Road Right-of-Way
24	09E12-00820-000	CLYDE C. BACHERT, JR.	389014 454544	N/A	05/28/2005 07/01/2006	N/A	30' Wide Airport Access Easement
25	09E12-0108-000	ARTHUR R. SHAW, III	389014 454544	2.997 ACRES	05/28/2005 07/01/2006	N/A	Taxway Easement

REFERENCE NO.	TAX PARCEL NO.	OWNER	ACREAGE	TYPE OF EASEMENT
1	09E12-0108-000	WORSNER	3.1 Acres	RPZ Easement / Avigation Easement
2	09E12-0026-000	ETNA/BAUCH	8.3 Acres	RPZ Easement / Avigation Easement
3	09E12-0127-000	B & A CUSTOM BUILT HOMES INC	8.8 Acres	RPZ Easement / Avigation Easement
4	09E12-0127-000	B & A CUSTOM BUILT HOMES INC	8.8 Acres	RPZ Easement / Avigation Easement
5	09E12-0108-000	SHAW	4.2 Acres	RPZ Easement / Avigation Easement / Taxway Easement
6	09E12-00820-000	CHAMBER	1.9 Acres	Avigation Easement / Taxway Easement
22	09E12-0046-000	LEONARD	8.7 Acres	Approach Protection / Obstruction Removal

- NOTES:
- Mapping completed by L. Robert Kimball and Associates, Inc. from aerial photography dated October 31, 2006. Metes and bounds were derived from various tax maps and deeds.
 - Cumberland Township Road Right-of-Way over the lands of the Susquehanna Area Regional Airport Authority (SARAA). Right-of-Way width is 30-feet on each side of the road centerline.
 - By a Deed of Easement dated May 29, 2005, Clyde C. Bachert, Jr. acknowledged the receipt a Taxway Easement 30' feet in width and 2.897 acres in area from Arthur R. Shaw, III. In exchange Clyde C. Bachert, Jr. provided to Arthur R. Shaw, III the free and uninterrupted use, liberty and privilege of, and passage in and along the common line of land of Bachert and Shaw including the right of Shaw to construct, grade, and pave a taxiway from his property to the Airport taxiway and runway. Shaw will limit his access along the common line to one area sixty (60) feet in width. There was an Amendment of Deed of Easement dated July 31, 2006 between the same parties to essentially provide Bachert with the Right of First Refusal to purchase subdivided parcels of Shaw's property.

REFERENCE NO.	TAX PARCEL NO.	DATE OF RELEASE	PURPOSE

REFERENCE NO.	TAX PARCEL NO.	OWNER	ACREAGE	PURPOSE
6	09E12-0084-000	BASER	1.72 Acres	Ultimate RPZ Control / Approach Protection / Obstruction Removal
7	09E12-0086-000	ADAMS COUNTY INTERFATH	1.23 Acres	Existing & Ultimate RPZ Control / Approach Protection / Obstruction Removal
8	09E12-0086-000	BETTLE	2.88 Acres	Existing & Ultimate RPZ Control / Approach Protection / Obstruction Removal
9	09E12-0087-000	BOELTZ	0.51 Acres	Existing & Ultimate RPZ Control / Approach Protection / Obstruction Removal
10	09E12-0086-000	LAMBERT	0.48 Acres	Ultimate RPZ Control / Approach Protection / Obstruction Removal
11	09E12-0100-000	NUNAMAKER	0.45 Acres	Ultimate RPZ Control / Approach Protection / Obstruction Removal
12	09E12-0101-000	KJC ENTERPRISES LLC	0.2 Acres	Ultimate RPZ Control / Approach Protection / Obstruction Removal
13	09E12-0102-000	KJC ENTERPRISES LLC	0.9 Acres	Existing & Ultimate RPZ Control / Approach Protection / Obstruction Removal
14	09E12-0086-000	BETTLE	9.19 Acres	Existing & Ultimate RPZ Control / Approach Protection / Obstruction Removal
15	09E12-0086-000	BETTLE	2.88 Acres	Existing & Ultimate RPZ Control / Approach Protection / Obstruction Removal
16	09E12-0086-000	ADAMS COUNTY INTERFATH	1.23 Acres	Ultimate RPZ Control / Approach Protection / Obstruction Removal
17	09E12-0140-000	GARRAHY	2.04 Acres	Existing & Ultimate RPZ Control / Approach Protection / Obstruction Removal
18	09E12-0102-000	DOERSON	1.47 Acres	Ultimate RPZ Control / Approach Protection / Obstruction Removal



Kimball
L. Robert Kimball & Associates
Architects and Engineers
328 Innovation Boulevard Suite 222
State College, PA 16803
phone (814) 472-7700
fax (814) 472-7712
email ron.deck@kimballcorp.com
web site www.kimballcorp.com

GETTYSBURG REGIONAL AIRPORT
CUMBERLAND TOWNSHIP PENNSYLVANIA
Exhibit A - Airport Property Map
AIP NUMBER: 3-42-0033-003-2007 DATE: 05/01/2010 DRAWING NO.
LRK PROJECT NO: 06-1800-0773 DRAWN BY: JMT
CAD FILE: P:\056 Property Map 05-0773.dwg CHECKED BY: RLD

ALP - 8